



Tintri Enterprise Cloud Platform

Ian Campbell
Senior System
Engineer - UK

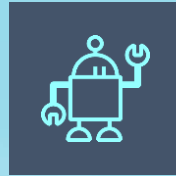


What is enterprise cloud?

Defined by these pillars



Resource Pooling



Heavily Automated



Elasticity



Measured



Self Service

Serving these applications

Enterprise Applications

Cloud Native Applications

Delivered via one or more models—
Multi-cloud

On-premises

Service Provider

Public Cloud



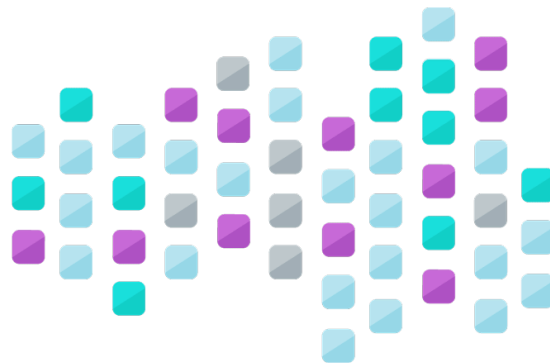
Why do enterprises pursue public cloud?

AGILITY

Why do enterprises pursue public cloud?



Start small and scaling up



Spin up and down new workloads

But not every workload belongs in public cloud



Some workloads must reside
in your data center—to ensure
predictable costs and performance—

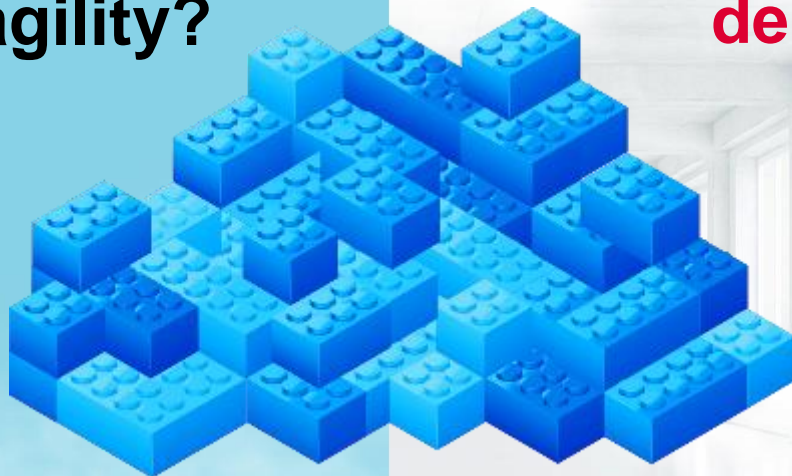
**and they require the
same level of agility.**

**Tintri delivers public cloud agility
inside your data center**



How do AWS and Azure deliver agility?

Public cloud architecture behaves like building blocks—it can be quickly and easily built up and torn down



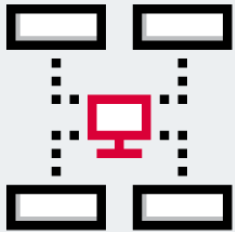
How does Tintri deliver agility?

With a building block architecture similar to public cloud

Tintri's web services building blocks

Level of abstraction

Open APIs



Autonomous



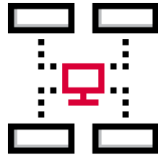
Analytics



Automation



Self-Service



Autonomous Operation

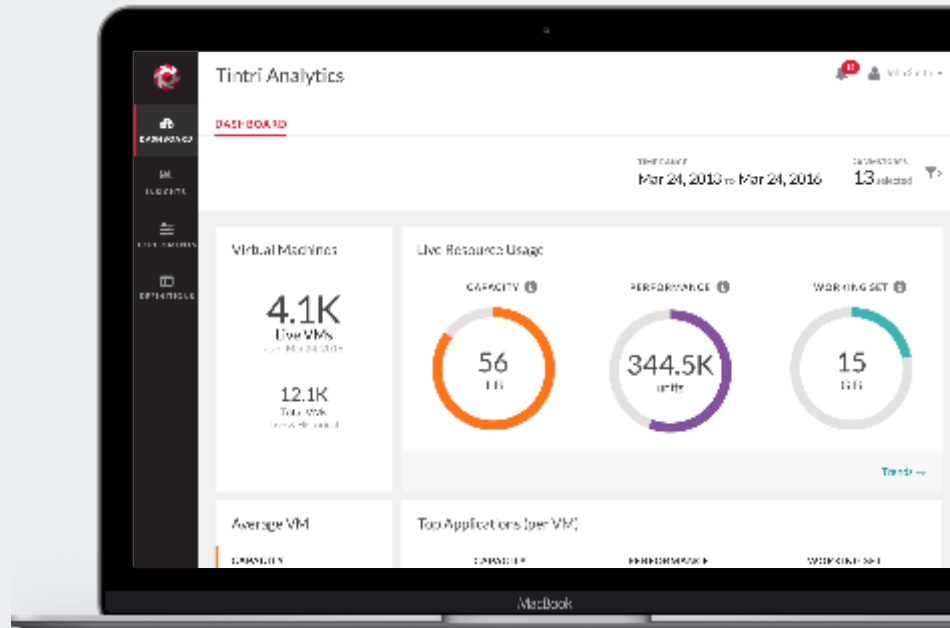
Eliminate manual intervention,
provide predictable high
performance at scale
automatically





Analytics

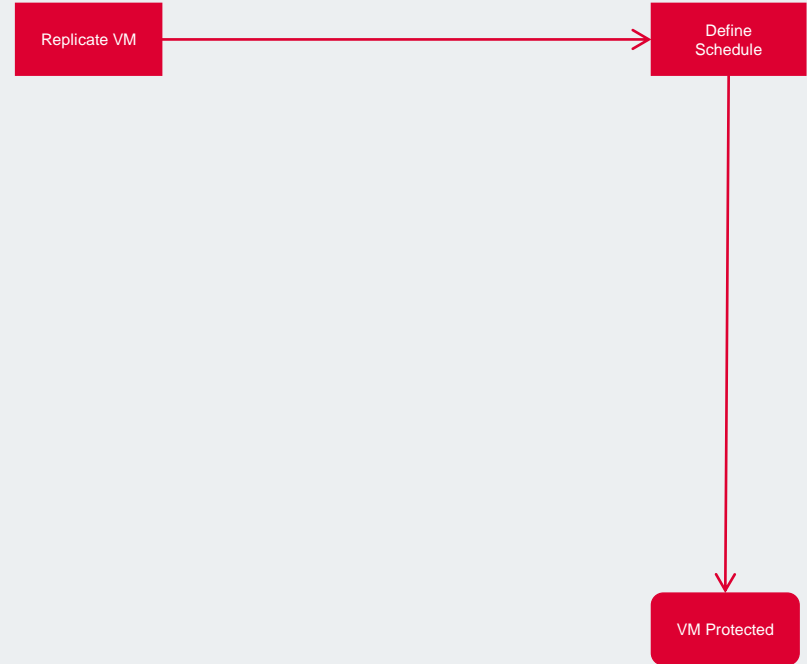
See real-time and predictive analytics that span storage and compute to make better decisions





Automation

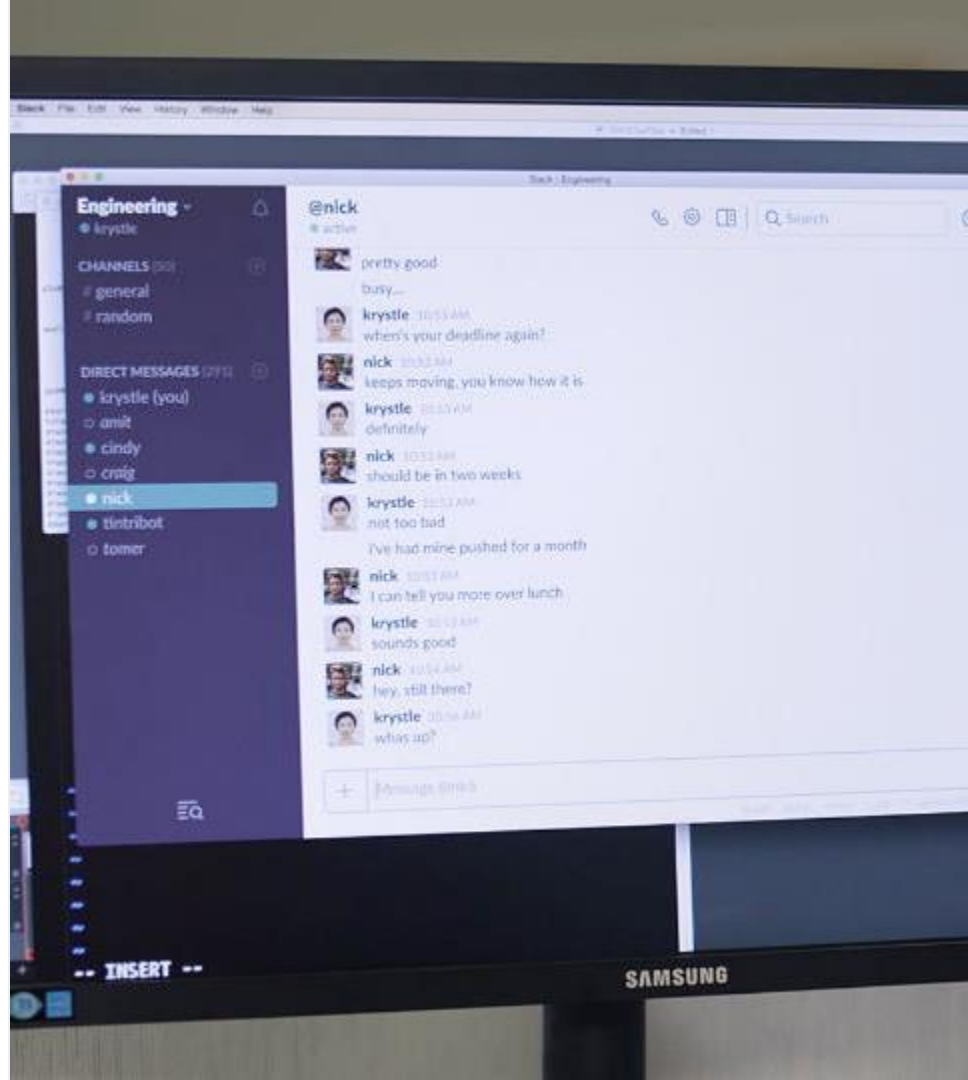
Automate otherwise manual tasks
to save resources, speed
processes and eliminate errors





Self-Service

Remove dependencies on IT and allow key constituents to manage their footprint



Why do companies choose Tintri?



Scale with predictable costs



Autonomous performance

Cloud Service Provider + Tintri

20x

Company Growth

4x

Storage Footprint Growth

0

Additional Storage FTE

F1000 Software Company + Tintri

120,000

New VMs/month

50+

Datstores

8

Data Centers

4

hrs/week

Financial Services Company + Tintri

5 hrs
to
5 min

Dev Updates

82%

Latency Reduction

18
month

Storage Prediction

1

hrs/week



Thank you